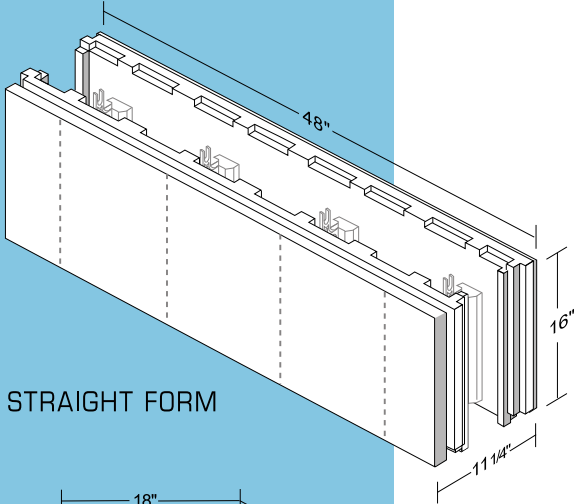
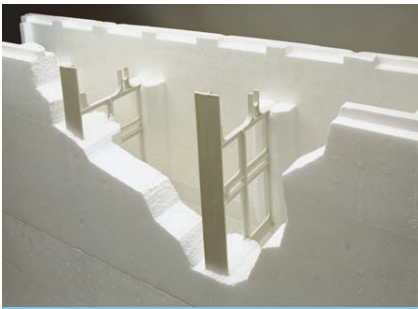


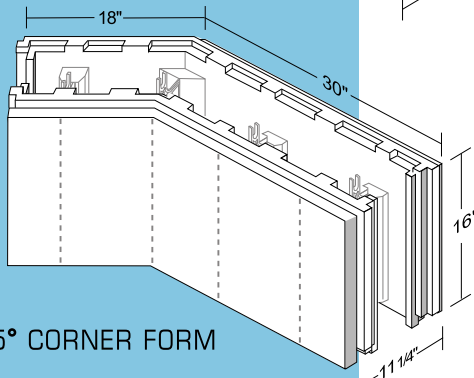
Build with Confidence...

BUILD with STANDARD ICFs™ **...The Contractor's Choice.**

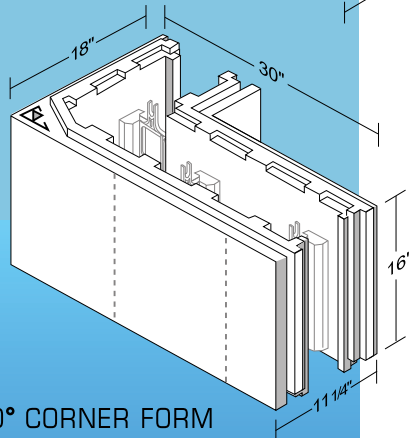
The Exclusive Modified Flat Wall System™



STRAIGHT FORM



45° CORNER FORM



90° CORNER FORM

- The **Exclusive** Standard ICF™ Modified Flat Wall System™ is flexible and conforms to a wide variety of standard design and building practices.
- The strong modified flat wall form design prevents racking, withstands concrete pressure, and minimizes bracing requirements.
- The continuous full height 1 5/8-inch wide x 12-inch on-center studs combined with the **exclusive** 3-inch wide full height corner brackets provide an excellent structure for attaching interior and exterior wall covering and finish materials.
- The unique modified flat wall design of the quality molded EPS foam panels with a density of 1.5 lbs net cured weight have a combined R-26 thermal resistance.
- The durable tongue and groove joints and **exclusive** interlocking alignment system simplifies installations and withstands the lateral pressure of concrete.
- The **exclusive** modified flat wall interior cavity allows for easy concrete flow while using 25% less concrete than 8-inch flat wall systems.
- The uniformly marked recessed stud system and **exclusive** convenient electrical chase provide for easy installations by electricians and other sub-contractors.
- The **Exclusive** Modified Flat Wall System™ can be easily cut-in-half horizontally, without compromising form strength, to accommodate wall heights; and 4-inch can be cut-off the top to meet structural and design requirements.



standardicf.com

800-925-FORM (3676)

Industry Leader Since 1989



Contact:

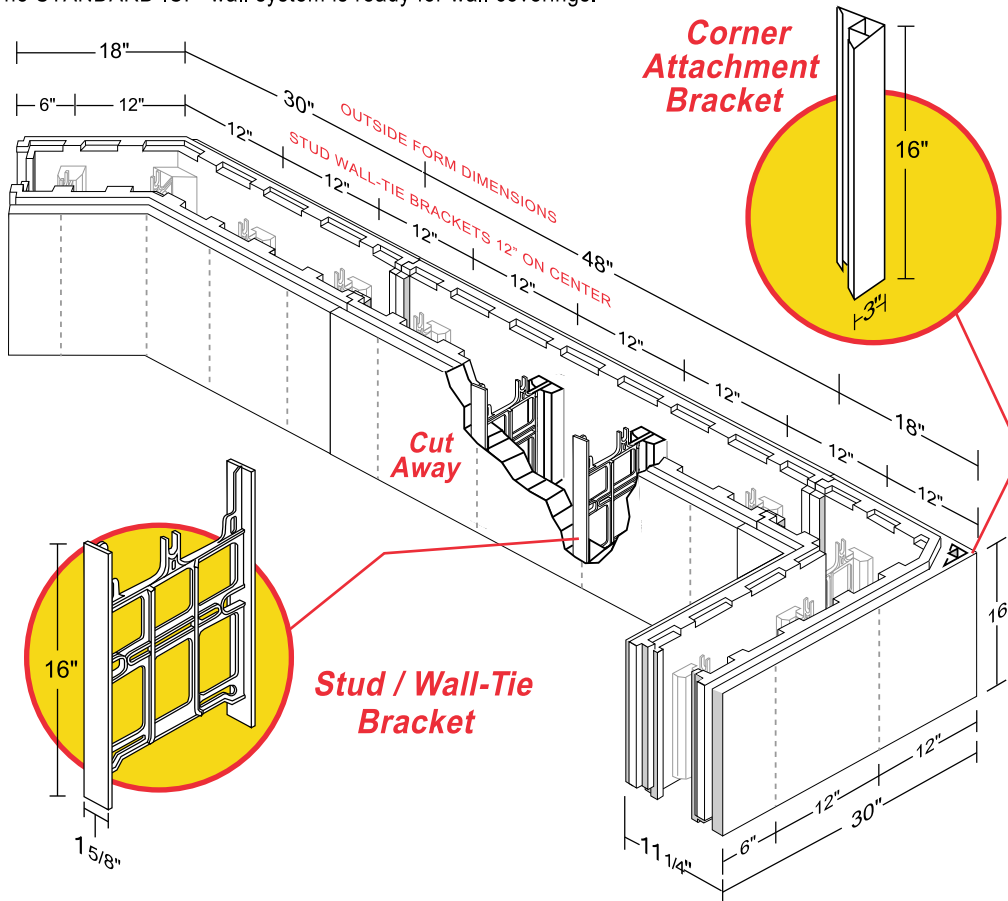
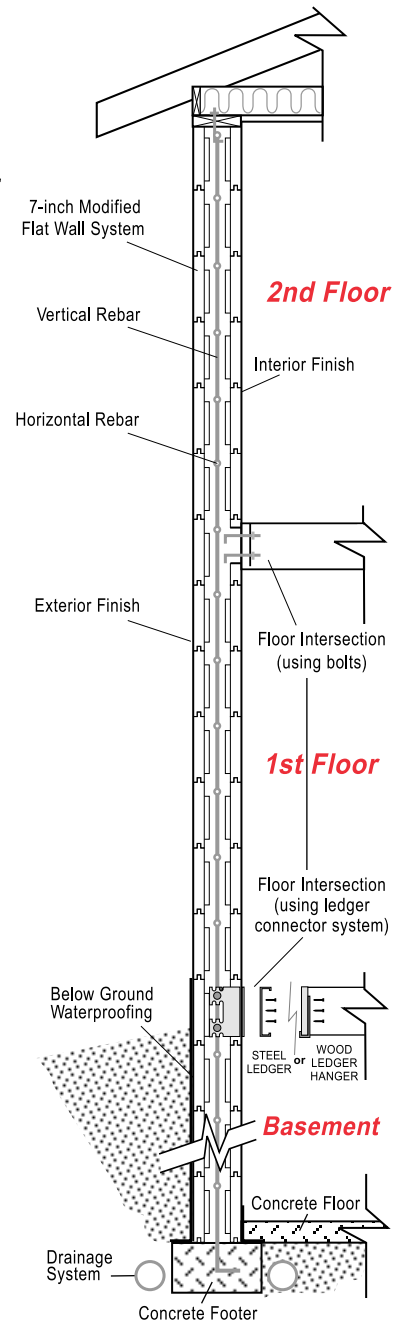
How STANDARD Insulating Concrete Forms™ Work:

- Install a level footing with a 1/4" plus or minus tolerance.
- Attach a temporary 2" x 4" guide board along wall perimeter.
- Door and window bucks are assembled and ready for installation.
- First course of STANDARD ICFs™ are glued in place on footing.
- Horizontal Re-bar is installed at regular intervals as required.
- Additional courses are stacked and glued in place as needed.
- Reinforce cut forms with wood strapping.
- Exterior bracing is installed and plumbed as needed.
- Scaffolding and bracing bucks are installed plumb and straight.
- Vertical Re-bar is installed at regular intervals as required.
- Concrete is pumped into the wall cavity and finished at the top.
- Braces and scaffolding are removed after concrete cures.
- Install waterproofing and drainage systems below grade.
- Backfill should not take place until walls are supported laterally.
- The STANDARD ICF™ wall system is ready for wall coverings.



The Exclusive 7-inch Modified Flat Wall Insulating Concrete Form System™

Typical Wall Section



Technical Information:

- Straight Forms**..... 48" length x 16" height x 11 1/4" width. • Weight 6 lbs. each.
90° Angle Forms..... 48" length (18" + 30") x 16" height x 11 1/4" width. • Weight 5 lbs. each.
45° Corner Forms..... 48" length (18" + 30") x 16" height x 11 1/4" width. • Weight 5.5 lbs. each.

Joint Design..... Tongue and groove edges with interlocking block and notch system for complete stud alignment and added strength to withstand concrete pressures.

Concrete Wall Design... Solid monolithic Modified 7" Flat Wall configuration:
 9" x 6 1/2" vertical columns - 12" on center
 6" x 6 1/2" horizontal beams - 16" on center
 3" thick connecting webs

Form Panels..... Surface area 5.33 Sq. ft. per side; Two panels of molded expanded polystyrene (MEPS) 2 3/8" - 2 1/2" thick.

Concrete Capacity..... 1 yard fills: 10.50 Straight Forms; 13.75 90° Corner Forms; 12 45° Corner Forms.

Stud Wall-Tie Bracket

1 5/8" wide x 16" height stud flanges form a continuous uninterrupted clearly marked fastening surface every 12" on center measured from both inside and outside corners and recessed 1/2" below foam surface. Bracket flanges form a fully aligned stud system from floor to ceiling with no double studs, no gaps and no spaces. ♻️ Made with recycled HDPE.

Corner Bracket..... 3" wide x 16" height corner bracket forms a 3" wide continuous fastening surface on both sides of corner.

Fasteners..... Use course thread screws and foam compatible adhesive.

Molded

EPS Foam..... Density: 1.5 lbs net (cured weight)
 R-Value: R-26+ by calculation. System performance comparison up to R-50.
 Fire Resistance: Fire retardant EPS. Wall system - 3hrs. with 5/8" drywall.
 Flame Spread: Less than 10; Smoke Development: Less than 300
 Toxicity: 24 (less than half the toxins of burning "pine" wood).
 Environmental Concerns: No off gassing, fumes, odors or toxic residue.
 Sound Resistance: STC 50.